

# MALENY HISTORY PRESERVATION AND RESTORATION SOCIETY INC

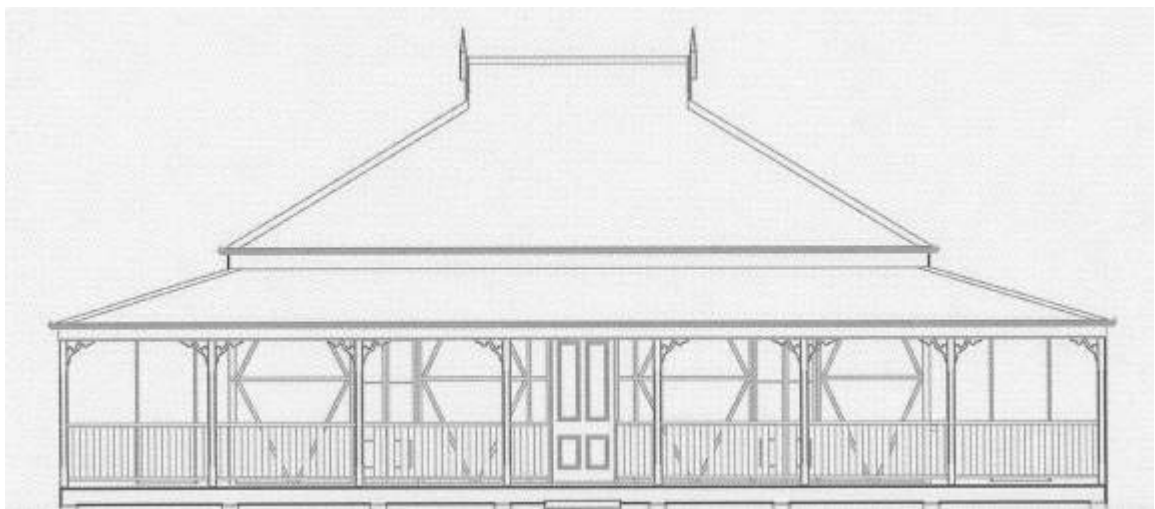
*“Keeping our local heritage alive”*

Submission to Sunshine Coast Regional Council

for

Maleny Community Precinct Master Plan

December 2008



*“The Maleny Historical Society relishes the challenge of restoring Pattemore House, which remains on its original site. Restoring the gardens and surrounds presents a unique and important challenge to the Society, which it proposes to tackle with abundant enthusiasm and great care.”*

## EXECUTIVE SUMMARY

1. Maleny History Preservation and Restoration Society Inc was formed in 1994. The Society has a demonstrated interest and successful track record in restoring heritage buildings and displaying them to the public.
2. The Society believes that Pattermore House has iconic status, and first expressed an interest in its restoration in 2001. In 2007 the Society joined MALPAN (Maleny Precinct Action Network). The primary interest of the Society in the Maleny Community Precinct is to ensure the preservation of Pattermore House and its surrounds.
3. Pattermore House (also known as “Fairview”) was listed by the Queensland Heritage Council in 2003. The listing boundary encompasses an area of approx 2.4 ha. The rainforest just to the north of Pattermore house is listed as a Heritage Place by the Sunshine Coast Regional Council, and is known as Porters Wood.
4. Caloundra City Council’s intent for the house was: “A small cultural and heritage precinct will be created around Pattermore House, incorporating a range of refreshment services such as a café, educational and learning uses” (22 Nov 2007). Council resolved that the Maleny Historical Society be given a lease for Pattermore House and its surrounds, and that the Friends of Pattermore House be formed immediately (28 Feb 2008).
5. The Friends of Pattermore House was formed in mid 2008, and currently has 53 members. Members include several Pattermore descendants.
6. The Society supports the recommendations for preservation and restoration of the dwelling contained in the report by Roger Todd “Pattermore House: Conservation Management Plan” (Sept 2008). Further, it endorses the recommendation that *“its setting must also be conserved, including the dense screening elements to the east, south and west of the house garden and the largely open space between the front of the house and the rainforest [Porters Wood] to the north.”*
7. The Society supports Barung Landcare’s intentions to move to the Maleny Precinct. However the Society is concerned that Barung’s location and activities should in no way impinge on the heritage values of Pattermore house and its setting. The Historical Society would be interested in contributing to any discussion which proposes to reduce the heritage listing boundary to a ‘curtilage’ area as suggested by Roger Todd.
8. The Society proposes to restore Pattermore House, in a manner sympathetic to the era and the location. Its future use is yet to be decided, but could include a small commercial operation, such as a café, as well as incorporating a display of Pattermore family furniture, utensils and documents.



The listed area and associated features Roger Todd 2008